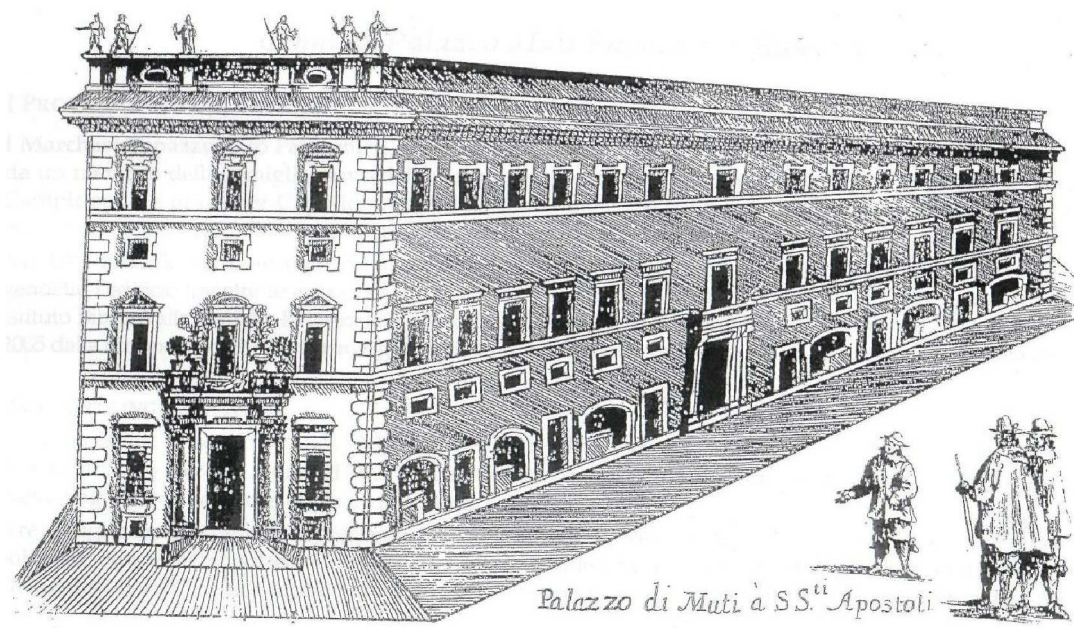


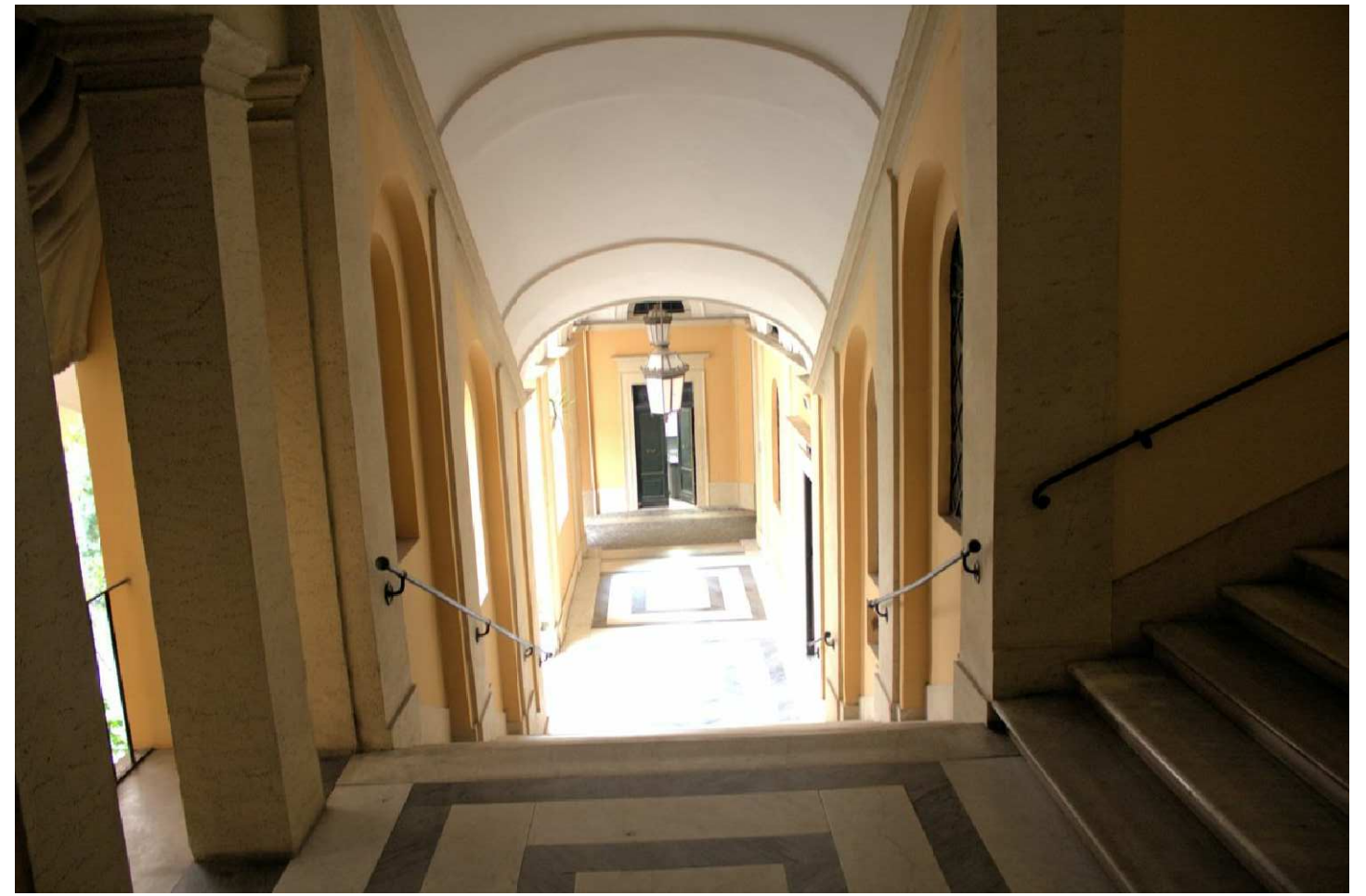
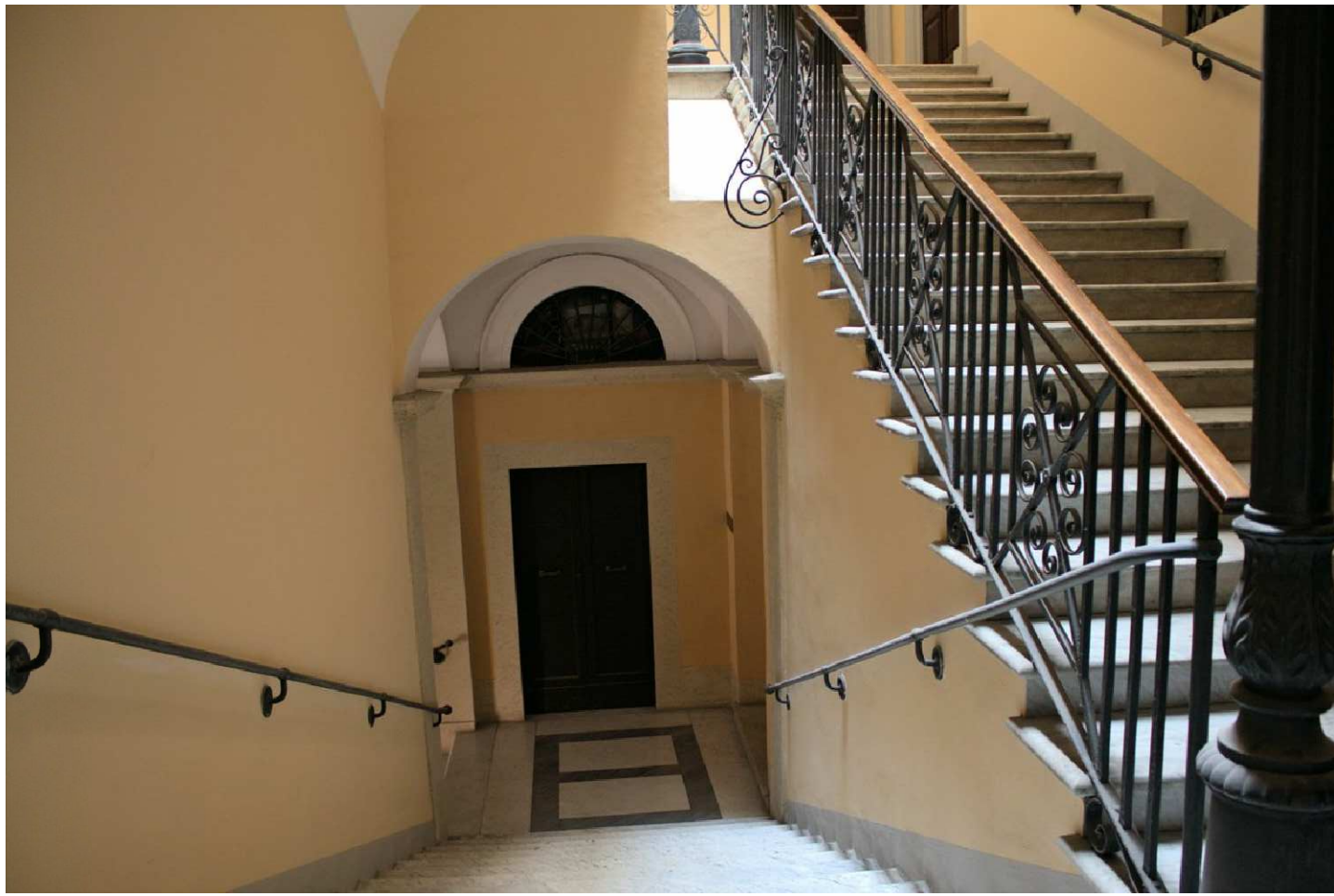


Piazza SS. Apostoli - Roma



Roma SS. Apostoli

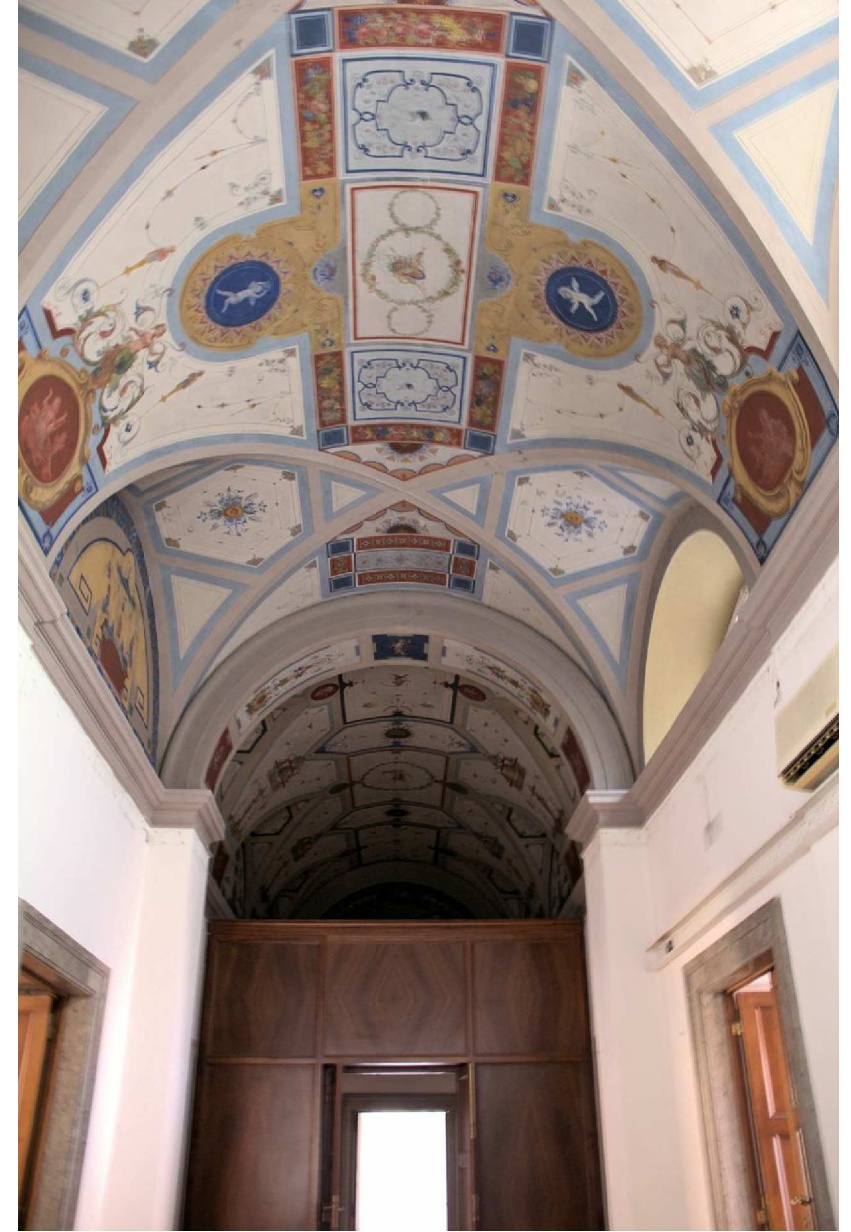




Roma SS. Apostoli



entrance



Roma SS. Apostoli



Roma SS. Apostoli



Description

The property, dating from the XVII, is located in the heart of Rome, at a walking distance from Trevi Fountain, Pantheon and Coliseum.

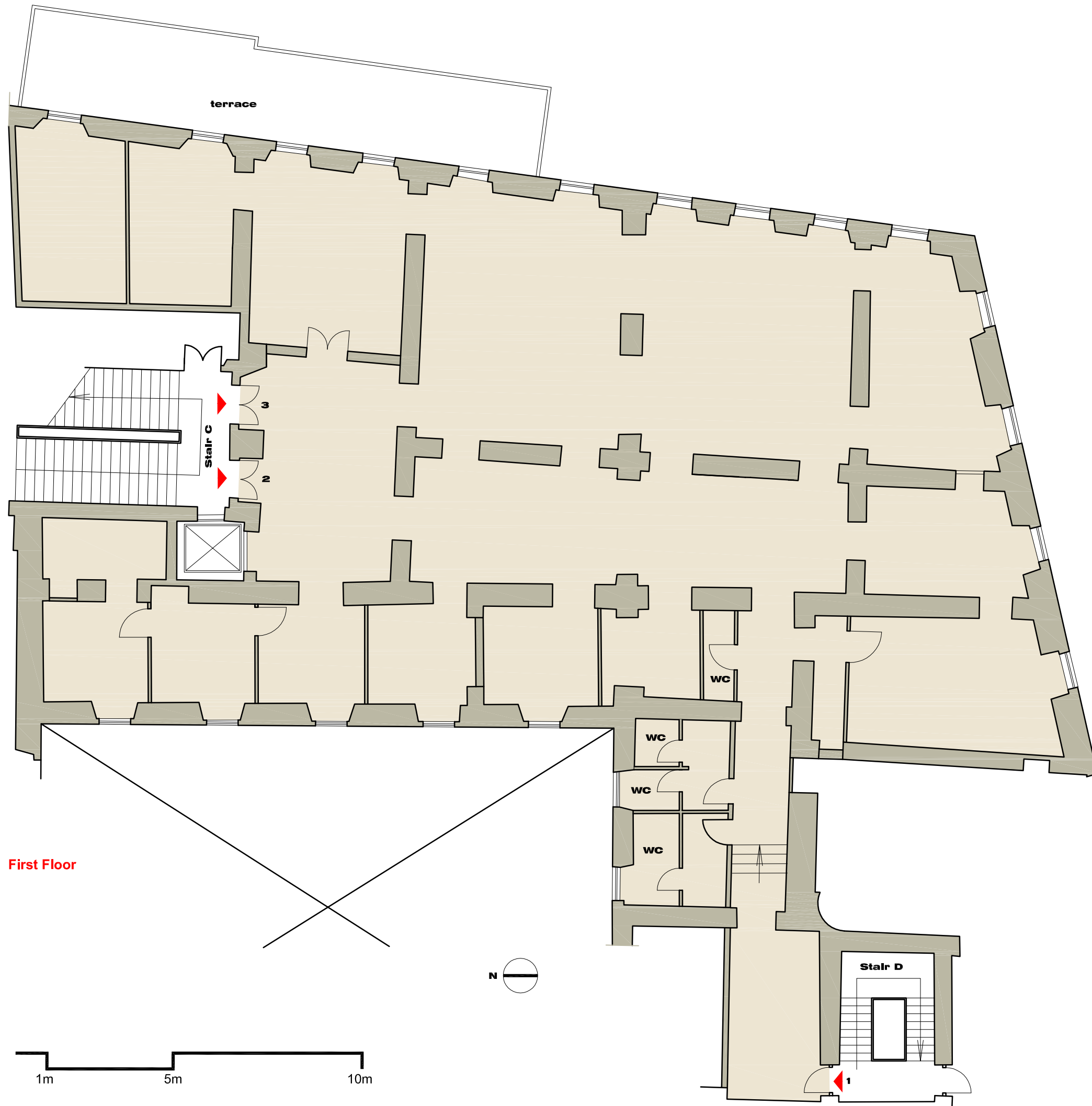
The property includes, at first floor, generous spaces decorated with frescos, for an overall gross floor area of 550 sqm.

The unit is served by two stairs and one lift and three entrances.

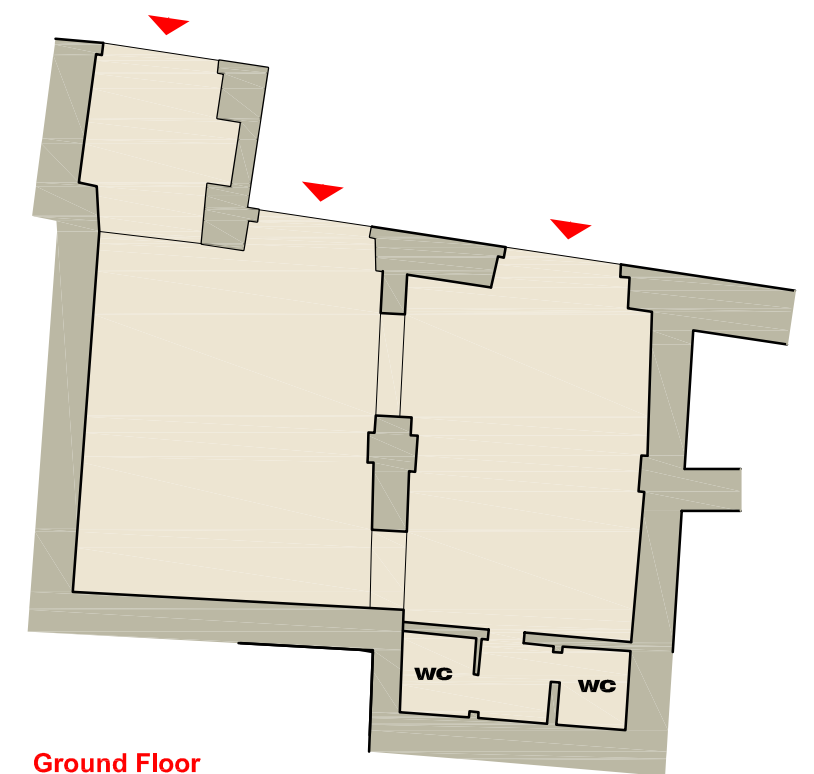
Currently the property is classified for office use and can be easily used for residential purposes and divided in smaller units.

The property includes, at ground floor, a commercial unit of 120 sqm that could be connected trough an internal stair to the level above.

The property can be sold in the current conditions or can be transformed trough an all inclusive service to suit the clients' needs.



First Floor



Ground Floor